

1. Unpack the luminaire.



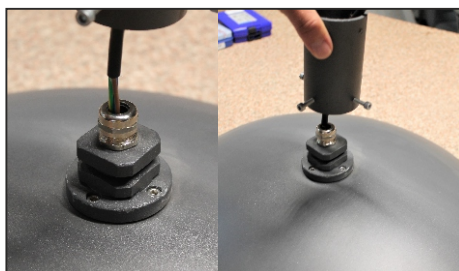
2a. Prepare the luminaire for the installation.
ATTENTION Boom diameter up to 50mm only.
With a connector gesis.



2b. Prepare the luminaire for the installation.
ATTENTION Boom up to diameter 50mm only.
With a cable.



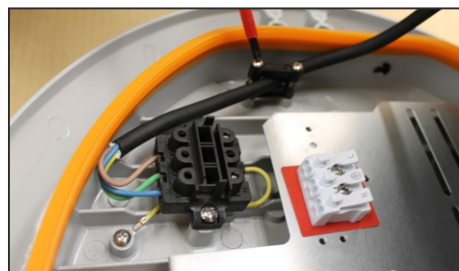
3. Cable connection.
Push the cable through the cable gland.



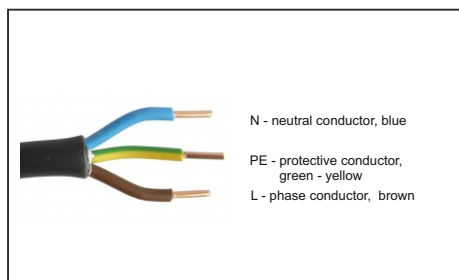
4. Strip the end of the cable and pull it through a cable holder.



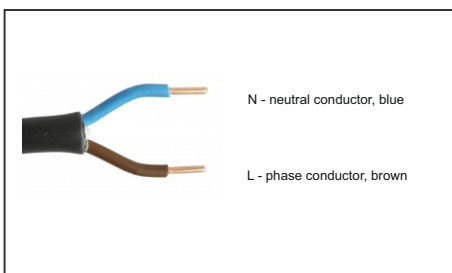
5. Connect the cable to the terminal block and tighten the holder.
Close the luminaire.



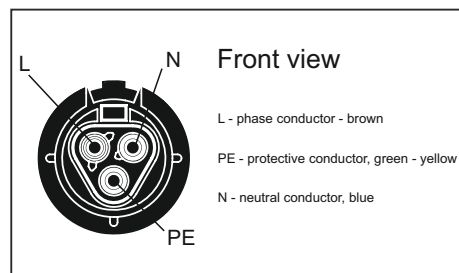
6. Connect the 3 core cable to the power supply (Class I.).



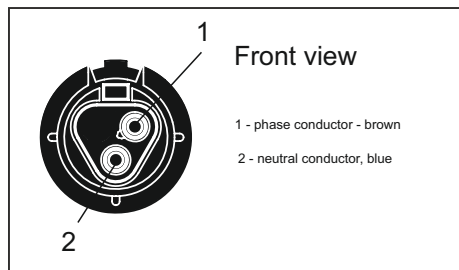
7. Connect the 2 core cable to the power supply (Class II.).



8. Connect the 3 pin connector Gesis to the power supply (Class I.).



9. Connect the 2 pin connector Gesis to the power supply (Class II.).



10. Slide the adapter onto the luminaire.



11. Lock with screws.
Tighten allen screws with tightening torque of 8 Nm.



12. If there is on the luminaire mask the label 'lighting direction' is affixed install the luminaire in the direction indicated.



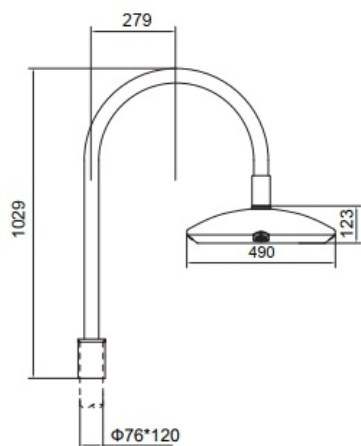
13. Mark the locations for drilling the hole
14. Drill two opposite holes into the boom with drill 7mm.




15. Lock with screws.
Tighten allen screws with tightening torque of 8 Nm.



For connecting leads shall be used separately approved terminal block conform to IEC 60998-2-1 or IEC 60998-2-2, with the following characteristics 2 (for class II) or 3 (for class I) pole, rated Voltage 250 V, rated current 1 A, with connection capacity up to 2,5 mm²



 = 8,4 kg

- Recommended installation height up to 6 meters.
- If the external flexible cable or cord of this luminaire is damaged, it shall be exclusively replaced by the manufacturer or his service agent or a similar qualified person in order to avoid a hazard.
- The light sources in this luminaire is only replaceable by the manufacturer or their technicians or a qualified person.

- **Caution, risk of electric shock** 

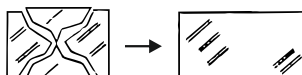
- The luminaire should be positioned so that prolonged staring into the luminaire at a distance closer than 0,7 m is not expected



- This luminaire operates at mains voltage 220-240V, 50-60 Hz.

Any modification to this luminaire is forbidden.

- Replace any cracked protective shield.



Cleaning:

clean the luminaire with the standard detergents. DO NOT use any abrasive detergents or solvents.

Installation and maintainance:
can provide only a person with an electrical qualification.

ELEKTRO-LUMEN, s. r. o.
Hranická 505
753 61 Hranice IV - Drahotuše
Česká republika

Telefon: +420 581 699 411
Fax: +420 581 699 419
E-mail: el-lumen@el-lumen.cz
Web: www.el-lumen.cz



The company reserves the right to change technical data and printing errors.
Copyright © ELEKTRO-LUMEN, s. r. o.