



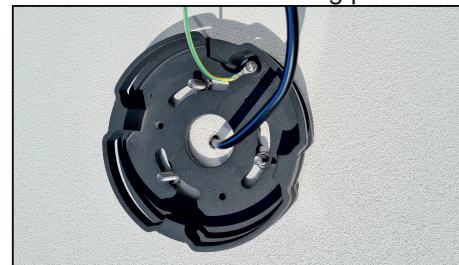
1. 1. Unpack the luminaire.



2. At the selected location, concrete in the supplied anchoring material according to the base. As an alternative, M8 threaded rods can be used. The power supply cable must be at least 0.5 m in length, with a maximum conductor cross-section of 4 mm<sup>2</sup>.



3. Feed the power supply cable through the center of the base. Place the base onto the anchoring points.



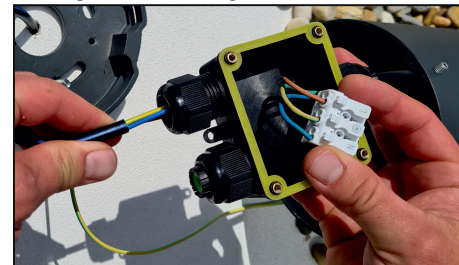
4. Securely screw down the base.



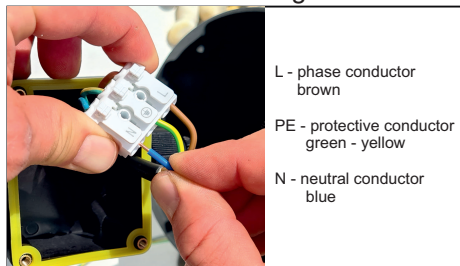
5. Unscrew the junction box.



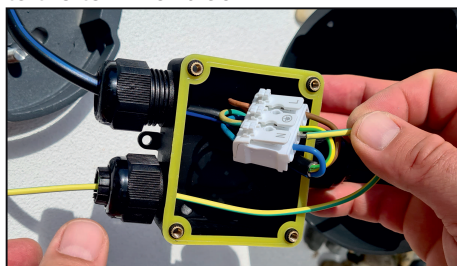
6. Feed the power supply cable through the cable gland.



7. Connect the power supply cable to the terminal block. For continuous installation, it is necessary to equip the junction box with an additional cable gland.



8. Feed the grounding wire through the second cable gland and connect it to the terminal block.



9. Screw the junction box closed and tighten the cable glands.

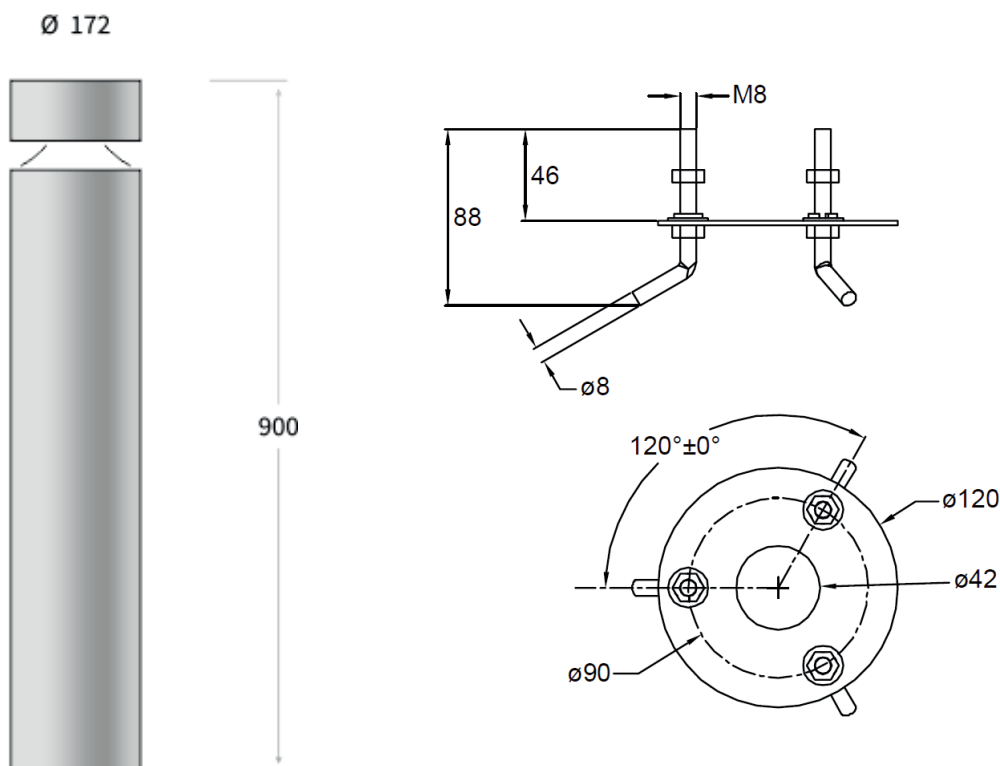



10. Slide the luminaire body pole onto the base.



11. Tighten the luminaire securing screws.





 = 7 kg

Installation on the ground.

- If the external flexible cable or cord of this luminaire is damaged, it shall be exclusively replaced by the manufacturer or his service agent or a similar qualified person in order to avoid a hazard.
- The light sources in this luminaire is only replaceable by the manufacturer or their technicians or a qualified person.
- This luminaire operates at mains voltage 220-240V, 50-60 Hz.
- Any modification to this luminaire is forbidden.

**Cleaning:**  
clean the luminaire with the standard detergents. DO NOT use any abrasive detergents or solvents.

**Installation and maintenance:**  
can provide only a person with an electrical qualification.

**ELEKTRO-LUMEN, s. r. o.**  
Hranická 505  
753 61 Hranice IV - Drahotuše  
Česká republika

**Telefon:** +420 581 699 411  
**Fax:** +420 581 699 419  
**E-mail:** el-lumen@el-lumen.cz  
**Web:** www.el-lumen.cz

The company reserves the right to change technical data and printing errors.  
Copyright © ELEKTRO-LUMEN, s. r. o.

